



111SM1



Actual product appearance may vary.

SM Series Subminiature Basic Switch, Single Pole Double Throw (SPDT), 250 Vac, 5 A, Straight Lever Actuator, Solder Termination

Features

- Long operating life
- Elongated mounting hole for easier, more accurate mounting
- Choice of actuation (plunger, as well as a variety of integral and auxiliary actuators)
- Choice of electrical termination (solder, quick connect, PCB)
- Choice of operating characteristics (sensitive differential travel as low as 0,0254 mm [0.001 in] maximum, low operating force to 0,56 N [2.0 oz] maximum)
- Optional series constructions available (gold contacts for low energy switching, bifurcated gold contacts for maximum reliability, power load switching capability to 11 A)
- MIL-PFR-8805 qualified listings available

Potential Applications

- Aerospace
- Instrumentation
- Appliances
- Vending machines
- Timing devices
- Office equipment
- Computer/business equipment
- Test instruments
- Medical/dental equipment
- Communications equipment
- HVAC equipment
- Manually operated devices
- Valves

Description

MICRO SWITCH™ SM Series subminiature basic switches are used for simple or precision on/off application needs. The MICRO SWITCH™ SM Series switches are slightly larger than the MICRO SWITCH™ SX Series switches. These switches combine small size and light weight with ample electrical capacity, precision operation and long life.

Product Specifications

Product Specifications	
Switch Type	MICRO SWITCH™ Subminiature 12,7 mm H x 6,35 mm W x 20,3 mm L [0.5 in H x 0.25 in W x 0.8 in L]
Sealed	No
Ampere Rating	5 A
Circuitry	Single Pole Double Throw (SPDT)
Actuator	Straight Lever
Termination	Solder

Operating Temperature Range	-55 °C to 125 °C [-67 °F to 257 °F]
Voltage	250 Vac
Approvals	CE,CSA,UL,ENEC
Actuator Length	4,83 mm [0.19 in]
Contact Type	Silver
Operating Force (O.F.)	1,95 N [7.0 oz] max.
Release Force (R.F.)	0,56 N [2.0 oz] min.
Pretravel (P.T.)	5,54 mm [0.218 in] max.
Overtravel (O.T.)	0,76 mm [0.030 in]
Differential Travel (D.T.)	0,76 mm [0.030 in] max.
Operating Position (O.P.)	8,89 mm ± 0,76 mm [0.350 in ± 0.030 in]
Housing Material	General Purpose Phenolic
High Temperature	204 °C [400 °F]
CE mark	61058-1
UL File #	E12252
CSA File #	LR41372
Agency Approvals and Standards	1054
Mounting Screw Size	22,1 mm [0.087 in]
Mounting Centers	9,65 mm [0.38 in]
Maximum Tightening Torque	0,26 N m [2.3 in lb]
Weight	2,72 g [0.006 lb]
Package Height	12,4 mm [0.49 in]
Package Width	6,35 mm [0.25 in]
Package Length	19,8 mm [0.78 in]
Recommended For	Force and stability of flexible leaf actuator
Availability	Global
UNSPSC Code	30211905
UNSPSC Commodity	30211905 Snap switches
Series Name	SM

MICRO SWITCH

A DIVISION OF MINNEAPOLIS-HONEYWELL REGULATOR COMPANY
 FREEPORT, MASSACHUSETTS

FED. MFR. CODE 91929

SWITCH - BASIC

CATALOG LISTING

111SM1

111SM1

PAGE 1 OF 1

M

DRAWING NUMBER

9

ISSUE

REPLACES

RELEASE NO. SR 8707

CHECK

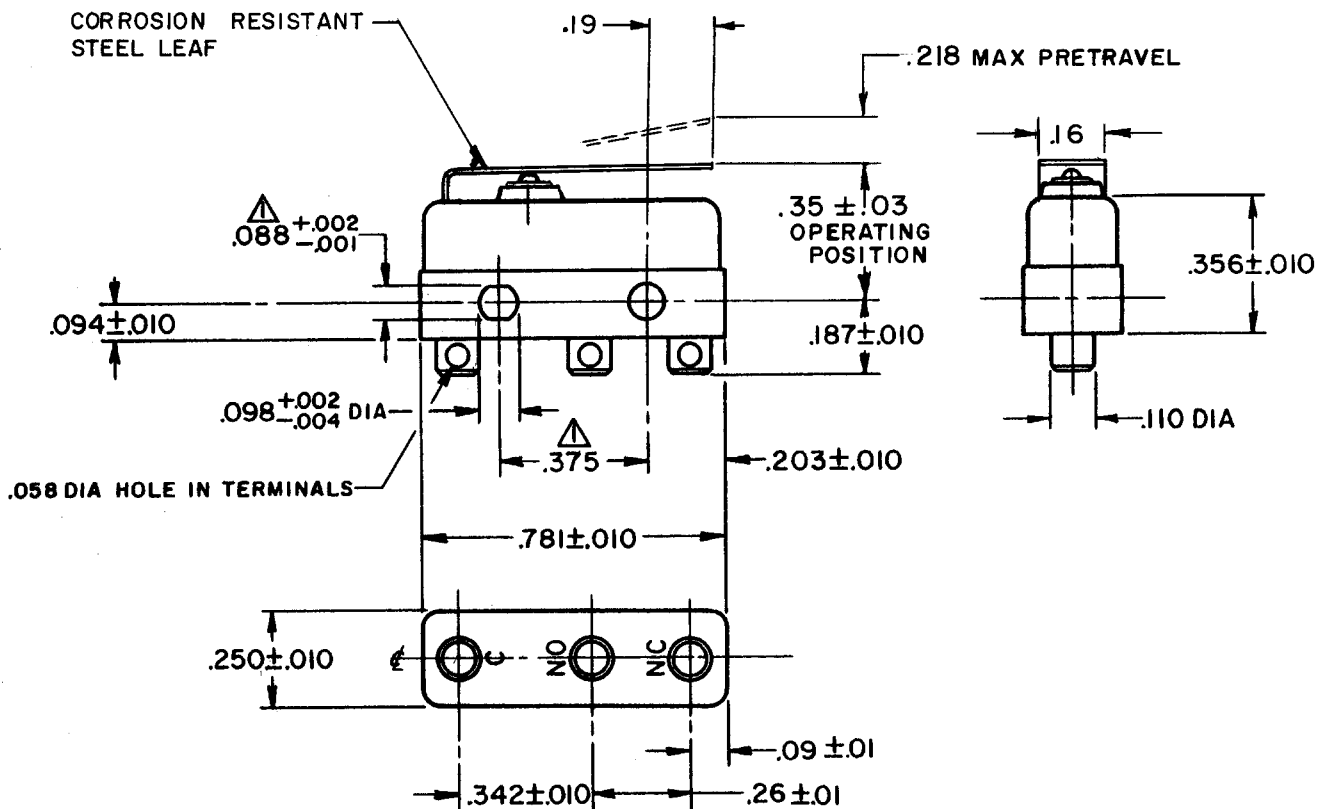
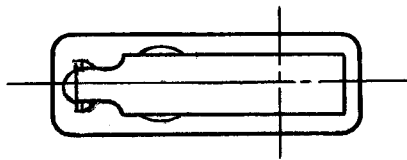
REVISIONS

A	CO14611	Y O	28 APR 60
B	CO18117	J A N	26 JUN 63
C	CO24706	G F S	28 SEPT 68
D	CO29449	R C R	12 SEPT 72
E	CO-36673	K S W	19 FEB 76
F	CO-77768	S A D	12 JUL 94
G	CO79612	S A D	11 APR 95
H	CO-93334	G J W	14 JUL 98

CHECK

CHECK

DRAWN L S D 30 DEC 59



NOTE -

- ▲-MOUNTING HOLES WILL ACCEPT PINS OR SCREWS OF .087 MAX DIA ON .375 $\pm .002$ CENTERS
- 2-TERMINALS ARE PLATED FOR SOLDERING

THIS DRAWING COVERS A PROPRIETARY ITEM AND IS THE PROPERTY OF MICRO SWITCH, A DIVISION OF MINNEAPOLIS-HONEYWELL REGULATOR CO. THIS DRAWING IS NOT TO BE COPIED OR USED WITHOUT THE APPROVAL OF MICRO SWITCH.

CHARACTERISTICS

OPERATING FORCE	----- 7 OZ MAX
RELEASE FORCE	----- 2 OZ MIN
DIFFERENTIAL TRAVEL	----- .030 MAX
OVERTRAVEL	----- .030 MIN

ELECTRICAL DATA

CONTACT ARRANGEMENT	
S P D T	
30 VOLTS DC RATING	
INDUCTIVE	SEA LEVEL --- 3 AMP
	50,000 FT. --- 2.5 AMP
RESISTIVE	SEA LEVEL --- 5 AMP
	50,000 FT. --- 5 AMP
MAXIMUM INRUSH	----- 24 AMP

SCALE 2 TO 1

DO NOT SCALE PRINT

UNLESS OTHERWISE SPECIFIED
 DIMENSIONS ARE IN INCHES

TOLERANCES ARE:

ONE PLACE (.0)	$\pm .030$
TWO PLACE (.00)	$\pm .015$
THREE PLACE (.000)	$\pm .008$
ANGLES	\pm

L4 5A 250 VAC ~

WEIGHT .006 LB MAX